

Jason V. Barabba

The Distance of the Moon

for solo piano

Jason V. Barabba

The Distance of the Moon

for solo piano

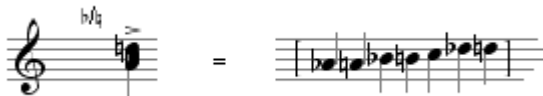
After the Italo Calvino short story "La distanza della Luna" in the book *Cosmicomics*.

Duration – Approximately 16 Minutes

Performance Notes

Any chords that are spaced too far apart to be played in one hand should be played with two hands, and should not be rolled.

Cluster notation indicates the following.



Pedaling marks are included when there are specific musical needs for the pedal. Lack of pedal marks does not indicate that a section should not be pedaled, just that pedaling is up to the performer.

The sostenuto (middle) pedal is indicated with the following notation.



The Distance of the Moon is registered with ASCAP.

© 2009 – Jason V. Barabba

www.jasonbarabba.com

barabba@mindspring.com

(323) 668-0662

10"x14" performance score is available.

The Distance of the Moon

Jason V. Barabba
September 2009

Approx $\text{♩} = 120$

Piano

Measures 1-6 of the piano score. The piece is in 4/4 time. The first three measures are in G major, and the last three are in D major. Dynamics range from *f* to *mp*. The score includes a piano introduction with various textures and articulations.

Lento (Approx $\text{♩} = 60$)

7

Measures 7-11 of the piano score. The tempo is Lento. The key signature changes to B-flat major. Dynamics include *ff* and *p*. The score features a triplet in measure 11 and a 6/4 time signature change in measure 10.

Presto (Approx $\text{♩} = 160$)
Traveling

12

Measures 12-15 of the piano score. The tempo is Presto. The key signature changes to D major. Dynamics range from *mf* to *f*. The score includes a triplet in measure 12 and a *8va* marking in measure 13. The bass line features a *Ped.* marking in measure 12.

16

Measures 16-19 of the piano score. The tempo is Presto. The key signature changes to B-flat major. Dynamics range from *mp* to *ff*. The score includes a triplet in measure 16 and a 5/4 time signature change in measure 18. The bass line features a *Ped.* marking in measure 16.

8^{va}

21

mf

mp *mf* *mp* *mf*

p *f*

mf

mp *f* *mp* *mf*

(8)

26

f *mf* *f* *f* *f*

mp *f*

f

